



# COMFORT COLORS<sup>®</sup>

STYLE AND  
COLOR GUIDE  
2024

# COMFORT COLORS®

## COLOR SWATCHES

### PIGMENT COLORS

Scan swatch for available styles.



Ivory  
2309C / 11D



**NEW** Neon Cantaloupe  
932C / 1CP



Blossom  
2036C / 03D



Chambray  
544C / 08D



Island Reef  
352C / 10D



**NEW** Neon Lemon  
937C / 2CP



Sandstone  
7536C / 37P



Butter  
7401C / 08P



Peachy  
7514C / 0CP



Orchid  
2071C / 26R



Hydrangea  
651C / 08P



Chalky Mint  
7472C / 08P



Celadon  
7492C / 06D



Khaki  
2325C / 22P



Citrus  
149C / 11P



Melon  
2023C / 25P



**NEW** Neon Violet  
0631C / 6CP



Lagoon Blue  
311C / 12D



Seafoam  
7475C / 38P



Grass  
2244C / 18P



Emerald  
329C / 15P



Mustard  
7405C / 28P



Terracotta  
2434C / 74G



Boysenberry  
7649C / 56P



Violet  
272C / 40P



Ice Blue  
5415C / 21P



Light Green  
5555C / 24P



Hemp  
2411C / 20P

## Legend



Boysenberry  
7649C / 56P

Color Name

Gildan Color Code

Pantone® Color Code

### DISCLAIMER

Our garments are pre-shrunk during the garment dye and wash processes for almost no shrinkage at home.

Pigment dye colors: These colors provide a vintage look that will remain for the life of the garment.

Reactive dye colors: Provide a traditional dyed appearance, with the same great softness.

Chambray, Lagoon Blue, Terracotta, Washed Denim and Cumin are being transitioned from Direct/Reactive dye to Pigment Dye.



**NEW** Bright Orange  
151C / 80P



Burnt Orange  
1505C / 07P



Royal Caribe  
640C / 36P



Washed Denim  
7682C / 22D



Periwinkle  
2726C / 35P



Blue Jean  
2138C / 03P



Neon Red Orange  
178C / 54I



Bright Salmon  
2345C / 06P



Crunchberry  
1916C / 13P



Berry  
2056C / 02P



Flo Blue  
2130C / 16P



Denim  
7545C / 14P



Watermelon  
1787C / 41P



Yam  
167C / 44P



Neon Pink  
212C / 32P



Wine  
262C / 43P



Grey  
2333C / 19P



Bay  
5635C / 02D



Cumin  
2341C / 06R



Crimson  
7426C / 12P



Brick  
1956C / 05P



Moss  
5606C / 28P



Blue Spruce  
5477C / 04P



Pepper  
2336C / 34P



Espresso  
7596C / 09P



Grape  
274C / 17P



Navy  
289C / 33P

# DIRECT/REACTIVE COLORS

Scan swatch for available styles. 



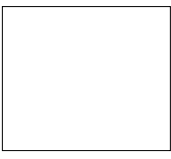
Banana  
7496C / 01D



Mystic Blue  
2718C / 15D



Sapphire  
7461C / 16R



White  
000C / 01W



Paprika  
2066C / 12R



Topaz Blue  
2224C / 28R



Midnight  
5346C / 06R



Granite  
430C / 09D



Red  
1866C / 15R



Island Green  
2243C / 29R



China Blue  
2956C / 04R



Graphite  
433C / 07R



Chili  
697C / 02R



Sage  
5743C / 18D



True Navy  
2826C / 18R



Black  
426C / 01R

# COLOR BLAST™



Citrine

7404C / C5P



Ocean

2137C / C2P



**NEW** Umber

472C / 7CP



**NEW** Fiji Blue

2905C / 5CP



Clay

1945C / C1P



**NEW** Sea Glass

563C / 3CP



**NEW** Hibiscus

0331C / 4CP



Fern

2410C / C4P



Amethyst

271C / C0P



Smoke

2332C / C3P

**DISCLAIMER**  
Color Blast™ is a pigment dye technique that yields a unique color and Color Blast™ effect in every garment.  
We do not guarantee consistency amongst individual garments.



## A PERFECT DYE PROCESS FOR EVERY PROJECT.

There's a Comfort Colors® tee for every mood, thanks to our unique dyeing technique. From nature-inspired vintage hues to bold saturated tones that pop, every piece of Comfort Colors® apparel undergoes a signature dye process that ensures minimal shrinkage and maximum coziness.

## PIGMENT DYES

As the original pigment-dye company, Comfort Colors® has been innovating and perfecting the pigment-dye process for over 45 years. With this unique method, dye molecules bind to the fabric to give an iconic, faded look. This process also has less impact on the environment thanks to our Pigment Pure™ dye process\*. This technique creates a garment that's cozy from the second you put it on and keeps getting softer every time you wear it.

\*Compared to traditional reactive garment dyed process.



## PIGMENT SPRAY

With their wide variety of color concentrations and textures, Color Blast™\* dyed garments are a fresh take on the classic pigment dyeing method. In this process, each tee is sprayed with dye, rather than being immersed in a dye bath, which gives each product a unique look. Pigment spray tees don't shrink or lose their shape, making them guaranteed favorites for years to come.

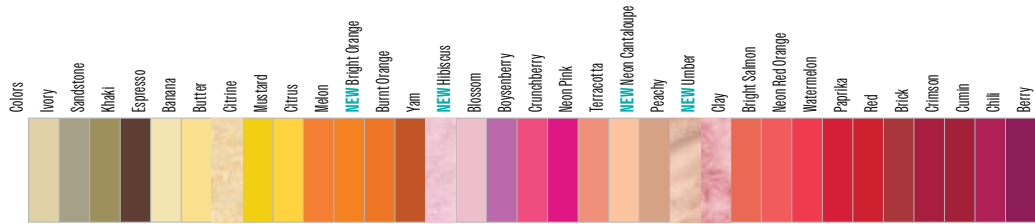
\*Pigment spray (Color Blast™) is a pigment dye technique that yields a unique color and Color Blast™ effect in every garment.

## DIRECT/REACTIVE COLORS

With this dyeing technique you can count on tees and hoodies maintaining their traditional dyed look wash after wash, because of the way they react to the dye being absorbed into the yarn. It's this direct/reactive process that gives these Comfort Colors® garments their signature vivid colors, vibrant hues, and long-lasting color-fastness. Direct/reactive tees are also sure to keep their softness, shape, and color reliability, for the life of the style.



# COLOR CHART



## STYLES

T-SHIRTS	Style	Size	Count	Colors																																				
	Style	Size	Count	Ivory	Sandstone	Khaki	Espresso	Barana	Butter	Citrine	Mustard	Citrus	Melon	NEW Bright Orange	Burnt Orange	Yam	NEW Hibiscus	Blossom	Boysenberry	Crumcherry	Neon Pink	Terraotta	NEW Neon Cantaloupe	Peachy	NEW Umber	Clay	Bright Salmon	Neon Red Orange	Watermelon	Paprika	Red	Brick	Crimson	Cumin	Chili	Berry				
	1717 Heavyweight Adult T-Shirt	S - 4XL	68	■	■	■	■	■	■	■	■	■	■	■	■	■	■	■	■	■	■	■	■	■	■	■	■	■	■	■	■	■	■	■	■	■	■	■		
	1745 Heavyweight Color Blast™ Adult T-Shirt	S - 3XL	10						■	■							■								■															
	3023CL Heavyweight Women's Boxy T-Shirt	S - 2XL	6	■					■															■																
	4017 Lightweight Adult T-Shirt	S - 3XL	6																																					
	4410 Heavyweight Adult Long Sleeve Pocket T-Shirt	S - 3XL	27						■										■	■	■																		■	
	6014 Heavyweight Adult Long Sleeve T-Shirt	S - 3XL	52	■	■	■	■		■									■	■	■				■				■	■	■										■
	6030 Heavyweight Adult Pocket T-Shirt	S - 3XL	57	■	■	■			■									■	■	■				■				■	■	■								■	■	■
	9018 Heavyweight Youth T-Shirt	YXXS - YXL	31						■									■	■	■																				

TANK TOPS	Style	Size	Count	Colors																																			
	9360 Heavyweight Adult Tank	XS - 3XL	34	■	■				■									■		■	■	■																	

SWEATSHIRTS	Style	Size	Count	Colors																																				
	1545 Color Blast™ Adult Crewneck Sweatshirt	S - 3XL	6						■																		■													
	1566 Adult Crewneck Sweatshirt	S - 3XL	19						■																															
	1567 Adult Hooded Sweatshirt	S - 3XL	11																																					
	1580 Adult 1/4 Zip Sweatshirt	S - 3XL	6																																					
	1466 NEW Lightweight Adult Crewneck Sweatshirt	S - 3XL	14	■			■		■																■															
	1467 NEW Lightweight Adult Hooded Sweatshirt	S - 3XL	10	■					■																■															

SWEATPANTS	Style	Size	Count	Colors																																				
	1468 NEW Lightweight Adult Sweat Shorts	S - 2XL	6	■																					■															
	1469 NEW Lightweight Adult Sweatpants	S - 2XL	7				■																		■															







## Spreading good vibes

From soft fabrics to colorful dyes, we're all about you feeling good all over. We're committed to using 100% ring spun cotton that's grown and harvested in the U.S. And our unique Pigment Pure™ dye process lets us create a rainbow of earth-friendly colors using fewer resources\*. So you can take comfort in knowing that Comfort Colors® apparel is always soft on you, and even softer on the planet.

**Check out our new season-less lightweight collection of crewnecks, hooded sweatshirts and exciting new array of sweat shorts and sweatpants.**

\*Compared to traditional reactive garment dyed process.  
Comfort Colors® and Gildan® are registered trademarks owned by Gildan Activewear SRL.  
©2024 - 2025 Gildan Activewear SRL



# WELCOME TO A CLEANER DYE PROCESS, FOR A CLEANER WORLD

The weathered hues of our Comfort Colors are inspired by nature. So is our clean **Pigment Pure™** process, which provides the following benefits for the planet\*

-  **Uses 3 times less water**
-  **Takes 40% less process time**
-  **Consumes less energy**

Thanks to Pigment Pure™, Comfort Colors is an even more comfortable choice.

Pigment Pure™ is a unique process that helps us make more earth-friendly colors using fewer resources.+ We're also committed to using tees made of 100% ring-spun U.S. cotton to create comfort that lasts, with our dye process that puts the planet first.



COMFORT COLORS®  
**MADE WITH  
RESPECT™**

\*The data on the Pigment Pure™ process are based on approximate comparisons with conventional reactive dyeing and are averaged.  
+ Compared to conventional reactive dyeing process.



# What's New!

Lightweight Fleece - we'll go ahead and sign you up! With four new pieces to explore, your possibilities for prints just took off. Who says you can't wear sweats all year round?

## Lightweight Adult Sweatpants

1469

7 COLORS  
S - 2XL  
RELAXED FIT  
SIDE SEAMED PANT  
100% RING SPUN US COTTON  
6.4 oz/yd<sup>2</sup>



Model is 5'7" - S - Peachy

## Lightweight Adult Sweat Shorts

1468

6 COLORS  
S - 2XL  
RELAXED FIT  
SIDE SEAMED SHORT  
100% RING SPUN US COTTON  
6.4 oz/yd<sup>2</sup>



Model is 5'7" - S - Ivory

## Lightweight Adult Crewneck Sweatshirt

1466

14 COLORS  
S - 3XL  
RELAXED FIT  
SEAMLESS BODY  
100% RING SPUN US COTTON  
6.4 oz/yd<sup>2</sup>



Model is 5'7" - S - Crimson

## Lightweight Adult Hooded Sweatshirt

1467

10 COLORS  
S - 3XL  
RELAXED FIT  
SEAMLESS BODY  
100% RING SPUN US COTTON  
6.4 oz/yd<sup>2</sup>



Model is 6'1" - M - Hydrangea



SCAN TO  
VIEW FULL  
COLLECTION

# FLEECE

The call for casual and cozy is answered by Comfort Colors® amazing 3-end fleece. It's the perfect fit for your most particular customers, who place comfort and quality above all else.



**S - 3XL** 6 COLORS  
RELAXED FIT, SIDE SEAMED BODY  
80% RING SPUN US COTTON  
20% POLYESTER

☕ ☺ ☕  
9.5 oz/yd<sup>2</sup>



**S - 3XL** 19 COLORS  
RELAXED FIT, SIDE SEAMED BODY  
80% RING SPUN US COTTON  
20% POLYESTER

☕ ☺ ☕  
9.5 oz/yd<sup>2</sup>



**S - 3XL** 11 COLORS  
RELAXED FIT, SIDE SEAMED BODY  
80% RING SPUN US COTTON  
20% POLYESTER

☕ ☺ ☕  
9.5 oz/yd<sup>2</sup>



**S - 3XL** 6 COLORS  
RELAXED FIT, SIDE SEAMED BODY  
80% RING SPUN US COTTON  
20% POLYESTER

☕ ☺ ☕  
9.5 oz/yd<sup>2</sup>

For more details visit [comfortcolors.com](http://comfortcolors.com)  
FOR COLOR OFFERINGS, SEE FLEECE COLORS ON PAGES 2 & 3.



SCAN TO  
VIEW FULL  
COLLECTION

TOP FLEECE  
1566 - 1567 - 1580

# T-SHIRTS

We've got the tees to please. With an array of fabric weights, styles and silhouettes, there's something in here for everyone - from kids to adults, and colors to suit every taste. With new neon colors now available in 1717, and some exciting new Color Blast® shades, there's something fun for every shop!



**S - 2XL** 6 COLORS  
BOXY FIT, SLIGHTLY CROPPED SEAMLESS BODY  
100% RING SPUN US COTTON

☕ ☕ ☕  
6.1 oz/yd<sup>2</sup>



**S - 4XL** 68 COLORS  
RELAXED FIT, SEAMLESS BODY  
100% RING SPUN US COTTON

☕ ☕ ☕  
6.1 oz/yd<sup>2</sup>



**S - 3XL** 57 COLORS  
RELAXED FIT, SEAMLESS BODY  
100% RING SPUN US COTTON

☕ ☕ ☕  
6.1 oz/yd<sup>2</sup>



**S - 3XL** 10 COLORS  
RELAXED FIT, SEAMLESS BODY  
100% RING SPUN US COTTON

☕ ☕ ☕  
6.1 oz/yd<sup>2</sup>



**S - 3XL** 6 COLORS  
RELAXED FIT, SIDE SEAMED BODY  
100% RING SPUN US COTTON

☕ ☕ ☕  
4.8 oz/yd<sup>2</sup>

OUR PRODUCTS ARE CERTIFIED BY:  
OEKO-TEX - COTTON USA



SCAN TO  
VIEW FULL  
COLLECTION

For more details visit [comfortcolors.com](http://comfortcolors.com)  
FOR COLOR OFFERINGS, SEE T-SHIRT COLORS ON PAGES 2 & 3.

TOP STYLES  
1717 - 6030 - 6014





**YXXS - YXL**

31 COLORS

CLASSIC FIT, SEAMLESS BODY



100% RING SPUN US COTTON

6.1 oz/yd<sup>2</sup>



**XS - 3XL**

34 COLORS

RELAXED FIT, SEAMLESS BODY



100% RING SPUN US COTTON

6.1 oz/yd<sup>2</sup>



**S - 3XL**

27 COLORS

RELAXED FIT, SEAMLESS BODY



100% RING SPUN US COTTON

6.1 oz/yd<sup>2</sup>



**S - 3XL**

52 COLORS

RELAXED FIT, SEAMLESS BODY



100% RING SPUN US COTTON

6.1 oz/yd<sup>2</sup>



# DECORATING TECHNIQUES



## FLEECE

Reactive dyed

1545, 1566, 1567, 1580

3 End Fleece 80% Ring Spun Cotton/20% Polyester (Face: 100% Cotton Ring Spun 30 singles)

### Decorating Techniques

DTG █  
 Embroidery █  
 Heat Transfer █  
 Screen Print █  
 Sublimation █

## HEAVYWEIGHT COTTON

Reactive dyed

1717, 1745, 3023CL, 4410, 6014, 6030, 9018

Jersey 100% Ring Spun Cotton 20 singles

### Decorating Techniques

DTG █  
 Embroidery █  
 Heat Transfer █  
 Screen Print █  
 Sublimation █

## LIGHTWEIGHT FLEECE

Reactive dyed

1468, 1466, 1467, 1469

2 End Fleece 100% Ring Spun Cotton

### Decorating Techniques

DTG █  
 Embroidery █  
 Heat Transfer █  
 Screen Print █  
 Sublimation █

## FLEECE

Pigment dyed

1545, 1566, 1567, 1580

3 End Fleece 80% Ring Spun Cotton/20% Polyester (Face: 100% Cotton Ring Spun 30 singles)

### Decorating Techniques

DTG █  
 Embroidery █  
 Heat Transfer █  
 Screen Print █  
 Sublimation █

## HEAVYWEIGHT COTTON

Pigment dyed

1717, 1745, 3023CL, 4410, 6014, 6030, 9018

Jersey 100% Ring Spun Cotton 20 singles

### Decorating Techniques

DTG █  
 Embroidery █  
 Heat Transfer █  
 Screen Print █  
 Sublimation █

## LIGHTWEIGHT FLEECE

Pigment dyed

1468, 1466, 1467, 1469

2 End Fleece 100% Ring Spun Cotton CPRS

### Decorating Techniques

DTG █  
 Embroidery █  
 Heat Transfer █  
 Screen Print █  
 Sublimation █

Legend: █ Ideal, █ Recommended, █ Not Recommended

# FIT GUIDE

## CLASSIC FIT

This comfort-wear essential for youth has a casual fit with room to grow. Ideal for chill vibes.



## RELAXED FIT

The ultimate carefree look for adults with a comfortable and effortless style. The perfect laid-back look.



## BOXY FIT

A fun-to-wear, relaxed and slightly cropped women's fit suitable for all body types. For that ultimate free feeling.



# SIZING CHART

STYLE #	YXXS	XS/LXS/YXS	S/LS/YXS	M/LM/YM	L/LL/YL	XL/LXL/YXL	2XL/L2XL/2XLT	3XL/L3XL/3XLT	4XL
<b>T-SHIRTS</b>									
1717			18 1/4" x 26 5/8"	20 1/4" x 28"	22" x 29 3/8"	24" x 30 3/4"	26" x 31 5/8"	27 3/4" x 32 1/2"	29 3/4" x 33 1/2"
1745			18 1/4" x 26 5/8"	20 1/4" x 28"	22" x 29 3/8"	24" x 30 3/4"	26" x 31 5/8"	27 3/4" x 32 1/2"	
3023CL			18 1/4" x 20"	20 1/4" x 21"	22" x 22"	24" x 23"	26" x 24"		
4017			18 1/2" x 28"	20 1/2" x 29 1/2"	22 1/2" x 30 3/4"	24 1/2" x 32"	26 1/2" x 33"	28 1/2" x 34"	
4410			18 1/4" x 26 5/8"	20 1/4" x 28"	22" x 29 3/8"	24" x 30 3/4"	26" x 31 5/8"	27 3/4" x 32 1/2"	
6014			18 1/4" x 26 5/8"	20 1/4" x 28"	22" x 29 3/8"	24" x 30 3/4"	26" x 31 5/8"	27 3/4" x 32 1/2"	
6030			18 1/4" x 26 5/8"	20 1/4" x 28"	22" x 29 3/8"	24" x 30 3/4"	26" x 31 5/8"	27 3/4" x 32 1/2"	
<b>YOUTH</b>									
9018	12 1/2" x 18"	13 1/2" x 18 3/4"	14 1/2" x 20 1/2"	16 1/2" x 21 1/2"	17 1/2" x 22 3/4"	19 1/2" x 26"			
<b>TANK TOPS</b>									
9360		16 1/2" x 25 1/4"	17 1/2" x 26 5/8"	19 1/2" x 28"	21 1/4" x 29 3/8"	23" x 30 3/4"	25" x 31 5/8"	27" x 32 1/2"	
<b>SWEATSHIRTS</b>									
1545			21" x 27 1/2"	23" x 28 1/2"	25" x 29 1/2"	26 1/2" x 30 1/2"	28" x 31 1/2"	29 1/2" x 32 1/2"	
1566			21" x 27 1/2"	23" x 28 1/2"	25" x 29 1/2"	26 1/2" x 30 1/2"	28" x 31 1/2"	29 1/2" x 32 1/2"	
1567			21" x 27 1/2"	23" x 28 1/2"	25" x 29 1/2"	26 1/2" x 30 1/2"	28" x 31 1/2"	29 1/2" x 32 1/2"	
1580			21" x 27 1/2"	23" x 28 1/2"	25" x 29 1/2"	26 1/2" x 30 1/2"	28" x 31 1/2"	29 1/2" x 32 1/2"	
1466			20" x 27"	22" x 28"	24" x 29"	26" x 30"	28" x 31"	30" x 32"	
1467			20" x 27"	22" x 28"	24" x 29"	26" x 30"	28" x 31"	30" x 32"	
<b>SWEATPANTS</b>									
1468			7 1/2" x 15"	7 1/2" x 16"	7 1/2" x 17"	7 1/2" x 18"	7 1/2" x 19 1/2"		
1469			27 3/4" x 15"	28 1/4" x 16"	28 3/4" x 17"	29 1/4" x 18"	29 3/4" x 19 1/2"		





## OUR ESG COMMITMENTS

### CLIMATE, ENERGY + WATER



- Reduce Scope 1 and Scope 2 GHG emissions by 30% by 2030 (compared to a 2018 base year)
- Reduce Scope 3 emissions by 13.5% by 2030 (compared to a 2019 base year)
- Reduce water intensity by 20% by 2030 (compared to a 2018 base year)

### CIRCULARITY



- By 2025 source 100% sustainable cotton
- By 2027 source 30% recycled polyester or alternative fibers and yarns
- Use 75% recycled and sustainable packaging and trim materials by 2027 Zero manufacturing waste sent to landfill by 2027.

### HUMAN CAPITAL MANAGEMENT



- Achieve gender parity for the collective group of employees representing director-level and above positions by 2027.
- By 2028 obtain ISO 45001 certification for 100% of owned and operated facilities.

### LONG-TERM VALUE CREATION

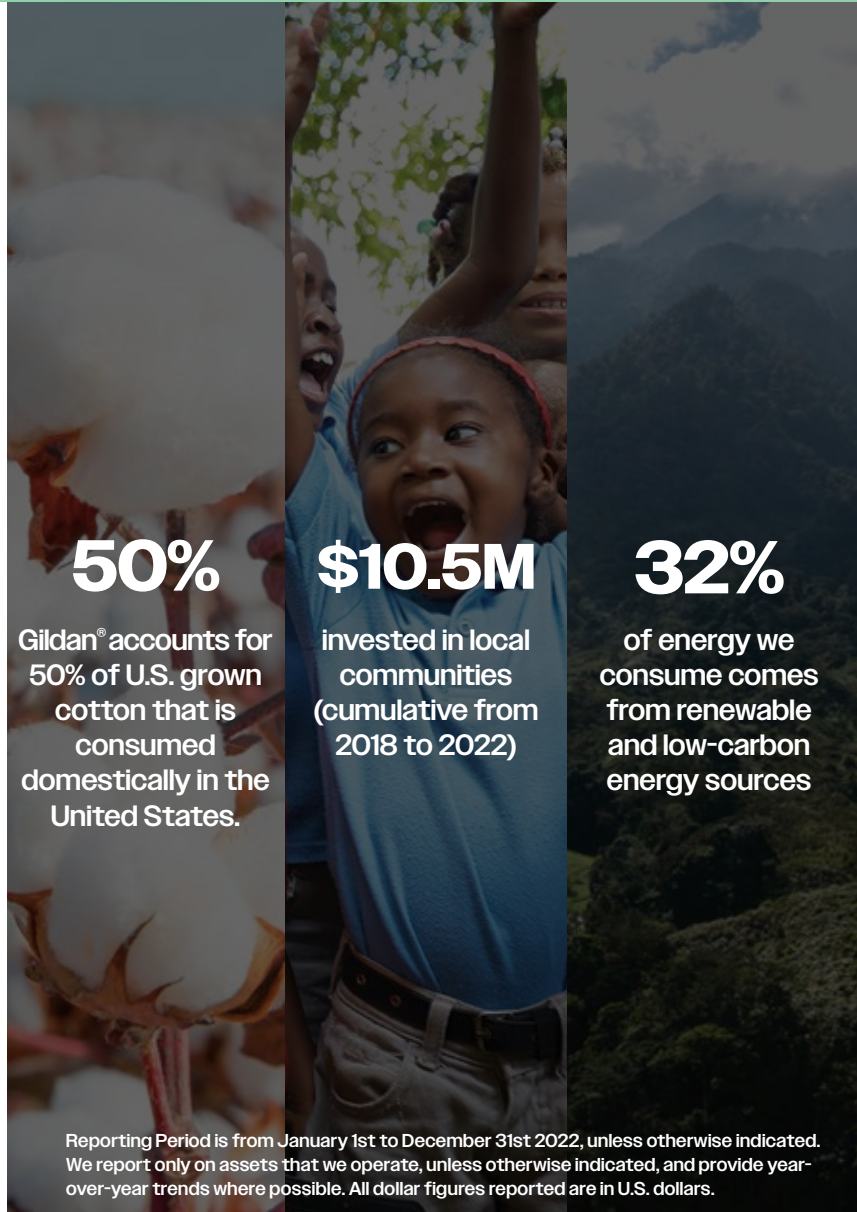


- By 2026 allocate 1% of pre-tax earnings toward community investment initiatives.

### TRANSPARENCY AND DISCLOSURE



- Published our first standalone Climate Change Disclosure Report in 2022. We plan to further improve our climate-disclosures over the coming years. while further enhancing and strengthening ESG disclosure across focus areas.



**50%**

Gildan® accounts for 50% of U.S. grown cotton that is consumed domestically in the United States.

**\$10.5M**

invested in local communities (cumulative from 2018 to 2022)

**32%**

of energy we consume comes from renewable and low-carbon energy sources

Reporting Period is from January 1st to December 31st 2022, unless otherwise indicated. We report only on assets that we operate, unless otherwise indicated, and provide year-over-year trends where possible. All dollar figures reported are in U.S. dollars.

## RECOGNITIONS + PARTNERSHIPS

Our 2022 recognitions are tributes to Gildan's standards, performance, and strength in making meaningful sustainability advancements.

**Dow Jones  
Sustainability Index**

**Corporate Knights' –  
Global 100 Most Sustainable Corporations**

**CDP's Leadership Band –  
2022 Climate Change Disclosures**

**S&P Global –  
Sustainability Yearbook Award**

# REDISCOVER OUR APP

Find the colors and styles you love  
with the Product Locator App.

Visit [comfortcolors.com](https://www.comfortcolors.com) for more information.

## Gildan® Product Locator App

Download the latest version of the Product Locator App to easily find your favorite styles and colors while on the go.

### Stay Updated



Receive real time notifications for back in stock styles and marketing promotions.

### Swatch Scan



Love the Color? Scan the swatch from the swatch card to discover the available styles.

### View Styles



Search by style, brand or color to browse your favorite products.

### Find Inventory



Connect with a distributor near you to find exactly what you want.

**DOWNLOAD THE  
PRODUCT LOCATOR APP**  
for inventory updates, Gildan®  
announcements, news and more.



Comfort Colors®, Gildan® and Color Blast™ are trademarks owned by  
Gildan Activewear SRL.

© 2024-2025 Gildan Activewear SRL